

## Skyfall

### General Information

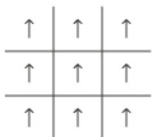
Product Number	21-1480
Construction	Sheared
Soil Stain Protection	Protekt <sup>2</sup> ®
Antimicrobial Treatment	Yes
Fiber Content	Nylon
Dye Method	100% Solution Dye
Post-Industrial	64%
Post Consumer	15%
Total Recycled Content	79%
Adhesive	FLORdots
Installation	Non-Directional

### Product Specification

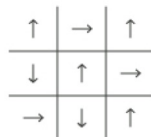
Tufted Yarn Weight	38 oz/yd <sup>2</sup>
Machine Gauge	1/10 in
Pile Height	.21 in
Pile Thickness	.148 in
Stitches	7.5/in
Pile Density	9243
Total Thickness	.343 in
Tile Size	19.7 in x 19.7 in

### Performance Specification

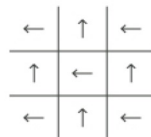
Indoor Air Quality	GREEN LABEL PLUS CERTIFIED
Radiant Panel	(ASTM E - 648) Class 1
Smoke Density	(ASTM E - 662)
Lightfastness	(AATCC16-E)
Static	(AATCC - 134) < 3.0 KV
Standard Backing	GlasBac Tile



Monolithic  
(Straight)



Non-Directional



Parquet  
(Quarter-Turned)

Post-Industrial: percentage of recycled content derived from industry scraps

Post Consumer: percentage of recycled content derived from materials recycled by consumers and businesses

Getting Greener Every Day. Learn more at [FLOR.com/responsible](https://www.flor.com/responsible)