

FLOOR®

An
Interface®
Company

2021
Commercial
Look Book

MADE YOU LOOK

Shown in Black, Bone, Mica

Coastal Wealth
Designed by STUDIO 818 Design + Build
Photo by Tony Laiacona

As the premium design brand of Interface®, FLOR has been bringing high-end area rugs to offices and homes since 2003. FLOR carpet tiles are beautiful, easy to install, and sustainably sourced. Our innovative area rug solution is the perfect design accent for offices, conference rooms, and high-profile collaborative spaces.

FLOR rugs have all the performance benefits of Interface products and come with a 15-year warranty, so they'll get the job done for years to come.

+ BEAUTIFUL
+ SMART
+ RESPONSIBLE



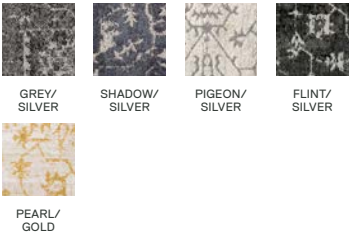
Mined And Yours

Mined And Yours

21-1472

SHOWN IN GREY/SILVER

BACKING	CQuest™GB Tile
CONSTRUCTION	Sheared
PILE THICKNESS	.220 in
RECYCLED CONTENT	86%
INDOOR AIR QUALITY	Green Label Plus Certified
INSTALLATION	Non-Directional



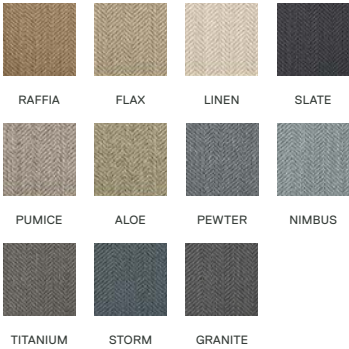
Suit Yourself

21-1318

SHOWN IN RAFFIA WITH MADE YOU LOOK IRON BORDER

BACKING	CQuest™GB Tile
CONSTRUCTION	Loop Pile
PILE THICKNESS	.121 in
RECYCLED CONTENT	83%
INDOOR AIR QUALITY	Green Label Plus Certified
INSTALLATION	Parquet (Quarter-Turned)

SHOWN WITH INTERFACE: LVT | LEVEL SET COLLECTION |
TEXTURED WOODGRAINS | A00406 ANTIQUE LIGHT OAK



Suit Yourself

Designed by NELSON Worldwide, Inc.
Photo by Garrett Rowland



RESPONSIBLE

With thoughtfully sourced materials and our Carbon Neutral Floors™ program, we design beautiful rugs with you and the Earth in mind.

“

FLOR helps us be more sustainable through optionality. We do not have to replace full carpets that have wear and tear—we can concentrate on the tiles that have lost their battles to stilettos over time.

WUNDERKIND

To learn more about this project visit FLOR.com/commercial

Palm Reader

21-1467

SHOWN IN KALE

BACKING

CONSTRUCTION

PILE THICKNESS

RECYCLED CONTENT

INDOOR AIR QUALITY

INSTALL METHOD

CQuest™GB Tile

Loop Pile

.241 in

87%

Green Label Plus Certified

Non-Directional



KALE

AQUAMARINE

TUNDRA

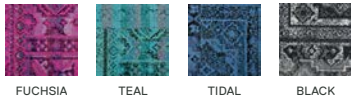
GREY

Palm Reader

Wunderkind
Designed by Gensler / Megan Dobstaff
Photo by Gensler / Inessa Binenbaum

Remembrance

21-1350	
SHOWN IN FUCHSIA	
BACKING	CQuest™GB Tile
CONSTRUCTION	Loop Pile
PILE THICKNESS	.082 in
RECYCLED CONTENT	84%
INDOOR AIR QUALITY	Green Label Plus Certified
INSTALL METHOD	Non-Directional



Remembrance
Wunderkind
Designed by Gensler / Megan Dobstaff
Photo by Gensler / Inessa Binenbaum



Electric Avenue
Wunderkind
Designed by Gensler / Megan Dobstaff
Photo by Gensler / Inessa Binenbaum



Nizhoni Patchwork
Wunderkind
Designed by Gensler / Megan Dobstaff
Photo by Gensler / Inessa Binenbaum

Electric Avenue

21-1478	
SHOWN IN AQUAMARINE	
BACKING	CQuest™GB Tile
CONSTRUCTION	Sheared
PILE THICKNESS	.171 in
RECYCLED CONTENT	85%
INDOOR AIR QUALITY	Green Label Plus Certified
INSTALL METHOD	Non-Directional



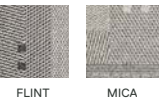
Nizhoni Patchwork

21-1424	
SHOWN IN PUMICE	
BACKING	CQuest™GB Tile
CONSTRUCTION	Loop Pile
PILE THICKNESS	.125 in
RECYCLED CONTENT	85%
INDOOR AIR QUALITY	Green Label Plus Certified
INSTALL METHOD	Non-Directional



Haywood

21-1500	
SHOWN IN FLINT	
BACKING	CQuest™GB Tile
CONSTRUCTION	Loop Pile
PILE THICKNESS	.085 in
RECYCLED CONTENT	84%
INDOOR AIR QUALITY	Green Label Plus Certified
INSTALL METHOD	Monolithic (Straight)



Haywood
FLOR.com/commercial | 7

Scottish Sett

21-1449

SHOWN IN BLACK

BACKING	CQuest™GB Tile
CONSTRUCTION	Loop Pile
PILE THICKNESS	.143 in
RECYCLED CONTENT	85%
INDOOR AIR QUALITY	Green Label Plus Certified
INSTALLATION	Non-Directional



Work. Play. Repeat.

With all the performance benefits of Interface® products plus a 15-year warranty, our rugs are made to work as hard as you do.

Down To Earth

Theismann's Restaurant
Designed by Carlee Cardwell / Dambly Design
Photo by Judy Davis

Urban Nature

21-1400

SHOWN IN STONE/GRASS

BACKING	CQuest™GB Tile
CONSTRUCTION	Loop Pile
PILE THICKNESS	.139 in
RECYCLED CONTENT	84%
INDOOR AIR QUALITY	Green Label Plus Certified
INSTALL METHOD	Monolithic (Straight) Non-Directional Parquet (Quarter-Turned)



Urban Nature

Theismann's Restaurant
Designed by Carlee Cardwell / Dambly Design
Photo by Judy Davis

Down To Earth

21-1402

SHOWN IN GRASS

BACKING	CQuest™GB Tile
CONSTRUCTION	Loop Pile
PILE THICKNESS	.141 in
RECYCLED CONTENT	85%
INDOOR AIR QUALITY	Green Label Plus Certified
INSTALL METHOD	Parquet (Quarter-Turned) or Non-Directional



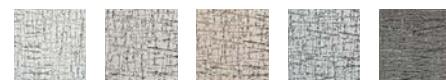


Turkish Smoke

21-1420

SHOWN IN FROST

BACKING	CQuest™GB Tile
CONSTRUCTION	Loop Pile
PILE THICKNESS	.132 in
RECYCLED CONTENT	84%
INDOOR AIR QUALITY	Green Label Plus Certified
INSTALL METHOD	Non-Directional



FROST PIGEON TAN BLACK GREY

Turkish Smoke

Hollin Hills

21-1479

SHOWN IN DUSTY BLUE

BACKING	CQuest™GB Tile
CONSTRUCTION	Sheared
PILE THICKNESS	.159 in
RECYCLED CONTENT	86%
INDOOR AIR QUALITY	Green Label Plus Certified
INSTALL METHOD	Non-Directional



DUSTY BLUE TEAL TUNDRA FLINT SPICE CLOUD



Hollin Hills

Milliman
Designed by John Hopkins, IA Interior Architects
Photo by Garrett Rowland

Anthracite

21-1494

SHOWN IN FLINT/SILVER

BACKING	CQuest™GB Tile
CONSTRUCTION	Loop Pile
PILE THICKNESS	.112 in
RECYCLED CONTENT	84%
INDOOR AIR QUALITY	Green Label Plus Certified
INSTALL METHOD	Monolithic (Straight)



FLINT/SILVER CHALK/SILVER PEARL/GOLD



Anthracite

House Pet

21-1031

SHOWN IN CHINCHILLA, BLACK CAT, FERRET

BACKING	Graphlar Tile
CONSTRUCTION	Textured Needlepoint Pile
PILE THICKNESS	.165 in
RECYCLED CONTENT	42%
INDOOR AIR QUALITY	N/A
INSTALL METHOD	Parquet (Quarter-Turned)



CHINCHILLA BLACK CAT FERRET IRISH SETTER HAMSTER SIAMESE

SHOWN WITH INTERFACE: LVT | LEVEL SET COLLECTION | NATURAL WOODGRAINS | CEDAR A00212



House Pet

Informa Exhibitions, Toronto Office
Designed by Dubbeldam Architecture + Design
Photo by Shai Gil

BEAUTIFUL

Work in style with bold patterns, colorful accents, and high-end designs that are anything but business as usual.

“ We integrated FLOR as accent pieces with the Interface LVT used on this project. FLOR helped in breaking up office spaces to create nooks where employees can go for a change of environment and a more home-like atmosphere.

SUSAN PRICE
To learn more about this project visit [FLOR.com/commercial](https://flor.com/commercial)

Doe Re Mi

- 21-1487

SHOWN IN INDIGO
- BACKING

CONSTRUCTION

PILE THICKNESS

RECYCLED CONTENT

INDOOR AIR QUALITY

INSTALL METHOD
- CQuest™GB Tile

Sheared

.114 in

85%

Green Label Plus Certified

Parquet (Quarter-Turned)

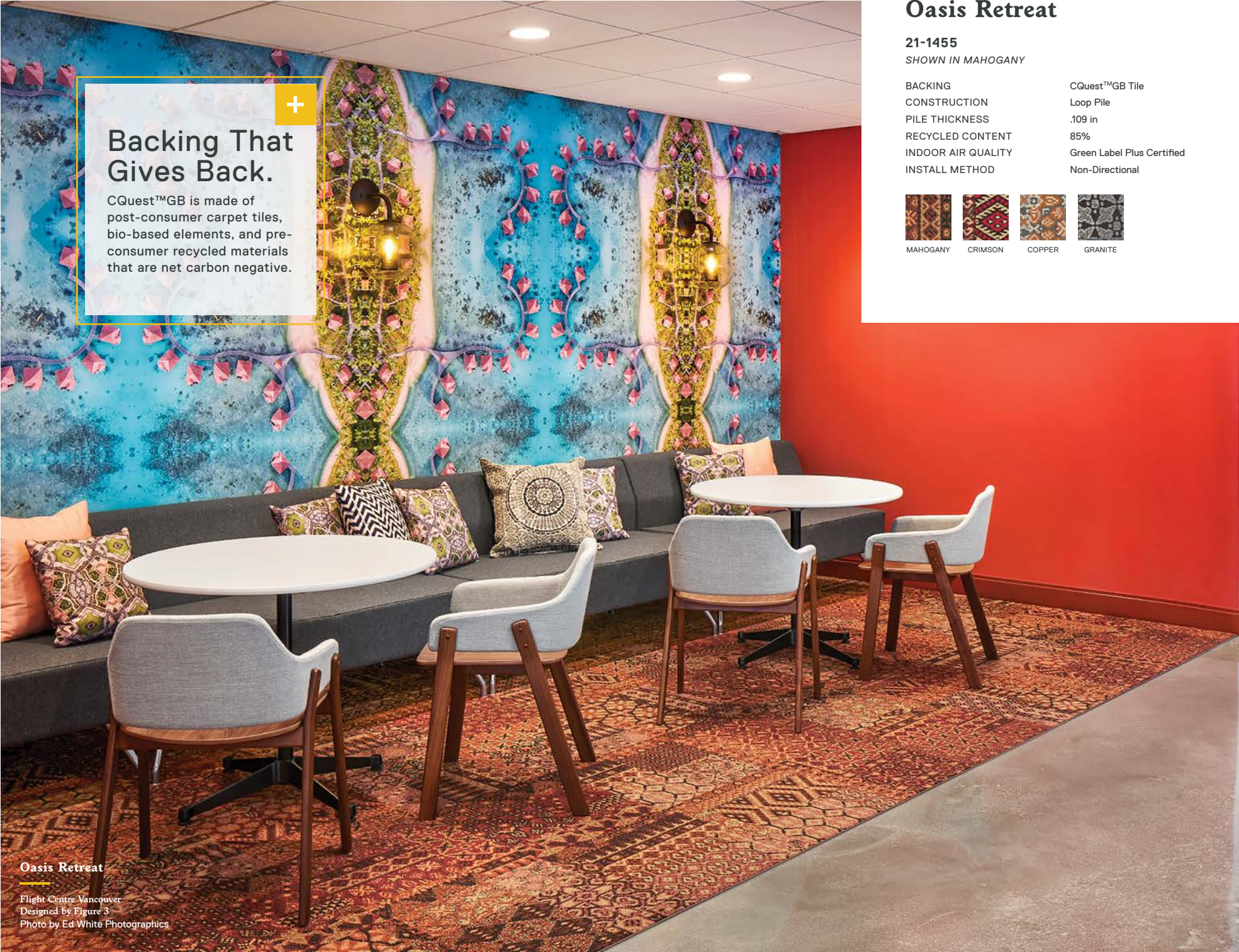
Monolithic (Straight)



SHOWN WITH INTERFACE: LVT | LEVEL SET COLLECTION | TEXTURED WOODGRAINS | A00408 ANTIQUE GRAY OAK



Doe Re Mi
NetApp
Designed by HAGERSMITH DESIGN PA
Photo by Monica Slaney | photographie:fourseven



Oasis Retreat

21-1455

SHOWN IN MAHOGANY

BACKING	CQuest™GB Tile
CONSTRUCTION	Loop Pile
PILE THICKNESS	.109 in
RECYCLED CONTENT	85%
INDOOR AIR QUALITY	Green Label Plus Certified
INSTALL METHOD	Non-Directional



MAHOGANY CRIMSON COPPER GRANITE

Oasis Retreat

Flight Centre Vancouver
Designed by Figure 3
Photo by Ed White Photographics

Skyfall

21-1480

SHOWN IN TURQUOISE

BACKING	CQuest™GB Tile
CONSTRUCTION	Sheared
PILE THICKNESS	.148 in
RECYCLED CONTENT	86%
INDOOR AIR QUALITY	Green Label Plus Certified
INSTALL METHOD	Non-Directional



TURQUOISE COBALT FLINT



Skyfall

Atlassian
Designed by CannonDesign
Photo by Kim Rodgers Photography



Crosswise

Crosswise

21-1505

SHOWN IN MICA

BACKING	CQuest™GB Tile
CONSTRUCTION	Loop Pile
PILE THICKNESS	.067 in
RECYCLED CONTENT	84%
INDOOR AIR QUALITY	Green Label Plus Certified
INSTALL METHOD	Monolithic (Straight)



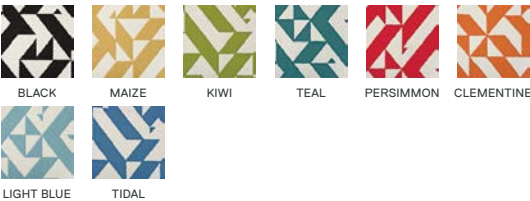
MICA FLINT PEARL

Twisted Spokes

21-1394

SHOWN IN BLACK

BACKING	CQuest™GB Tile
CONSTRUCTION	Loop Pile
PILE THICKNESS	.138 in
RECYCLED CONTENT	83%
INDOOR AIR QUALITY	Green Label Plus Certified
INSTALL METHOD	Non-Directional, Parquet (Quarter-Turned)



Twisted Spokes

NetApp
Designed by HAGERSMITH DESIGN PA
Photo by Monica Slaney | photographie:fourseven



Mod Cafe

21-1447

SHOWN IN CUSTOM

BACKING	CQuest™GB Tile
CONSTRUCTION	Loop Pile
PILE THICKNESS	.121 in
RECYCLED CONTENT	85%
INDOOR AIR QUALITY	Green Label Plus Certified
INSTALL METHOD	Monolithic (Straight)



SHOWN WITH INTERFACE: BIKE PATH COLLECTION | CUSTOM | BP410

Mod Cafe

Photo by Halkin Mason Photography

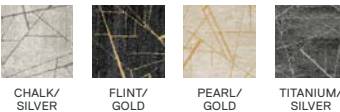


Chasing Pavement

21-1484

SHOWN IN CHALK/SILVER

BACKING	CQuest™GB Tile
CONSTRUCTION	Sheared
PILE THICKNESS	.172 in
RECYCLED CONTENT	86%
INDOOR AIR QUALITY	Green Label Plus Certified
INSTALL METHOD	Non-Directional



Chasing Pavement

Turo
Designed by Marjan Safdari / Revel Architecture & Design
Photo by Garrett Rowland



Cambium

21-1330

SHOWN IN GERANIUM

BACKING	CQuest™GB Tile
CONSTRUCTION	Loop Pile
PILE THICKNESS	.112 in
RECYCLED CONTENT	84%
INDOOR AIR QUALITY	Green Label Plus Certified
INSTALL METHOD	Monolithic (Straight) Parquet (Quarter-Turned)



SHOWN WITH INTERFACE: LVT | LEVEL SET COLLECTION | TEXTURED WOODGRAINS | ANTIQUE GRAY OAK A00408

Cambium

NetApp
Designed by HAGERSMITH DESIGN PA
Photo by Monica Slaney | photographie:fourseven



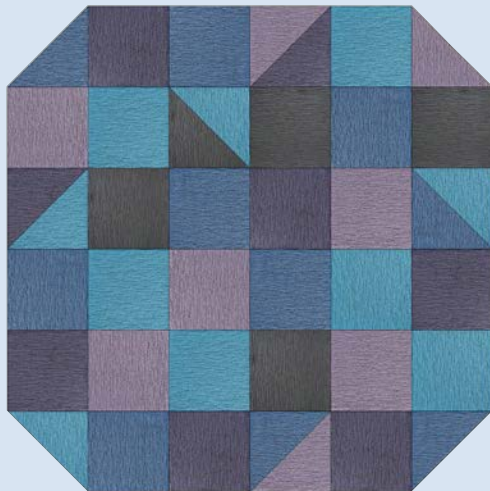
INTERFACE DESIGN STUDIO

Designer to designer.

Whether you're just getting started with a design project or you're looking for support in the home stretch, the Interface Design Studio is here to help. Our team of trained designers has a wealth of experience and a deep knowledge of our products, saving you time by focusing on the foundation of every design project—the floor.

Tailor-made service.

Looking for inspiration? Want to visualize products in a space? Interface Design Studio is equipped to do anything you need, from designing an entire floorplan to developing custom colors or even custom styles.



Work one-on-one with a Design Consultant by phone or email to define your style, discuss your project, and experiment with options for the perfect rug.

Contact your Account Executive or our dedicated FLOR Commercial team today.

866.481.3164 | FLOR.COM/COMMERCIAL



Made You Look

Sonic Union
Designed by Revamp Interior Design
Photo by Travis Mark

Made You Look

21-1361
SHOWN IN AQUAMARINE, LAPIS, SLATE, LAVENDER

BACKING	CQuest™GB Tile
CONSTRUCTION	Loop Pile
PILE THICKNESS	.127 in
RECYCLED CONTENT	84%
INDOOR AIR QUALITY	Green Label Plus Certified
INSTALL METHOD	Parquet (Quarter-Turned)

AQUAMARINE	LAPIS	SLATE	LAVENDER	GRAPE	TANGERINE
CLEMENTINE	MARIGOLD	MAIZE	ORANGE	RED	SCARLET
BERRY	PINK	MAGENTA	PERSIMMON	CORAL	BLUSH
IRIS	PURPLE	COBALT	TIDAL	LIGHT BLUE	SEAFOAM
SPA	OCEAN	BLUE JAY	INDIGO	TEAL	TURQUOISE
EMERALD	FOREST	CLOVER	KIWI	MINT	TAWNY
EGGNOG	BEIGE	BRIGHT WHITE	PEARL	PATINA	STONE
BONE	PIGEON	CHALK	LOAM	MINK	COPPER
BARK	MAHOGANY	FROST	FLANNEL BLUE	TITANIUM	FIELDSTONE
MICA	GRANITE	IRON	FLINT	GREY	BLACK



In The Deep

Designed by Janeen Arnold / Salt Of Maine Design Co.
Photo by Ben Rodgers

In The Deep

21-1403

SHOWN IN COBALT, BONE

BACKING	CQuest™GB Tile
CONSTRUCTION	Textured Cut Pile
PILE THICKNESS	.309 in
RECYCLED CONTENT	86%
INDOOR AIR QUALITY	Green Label Plus Certified
INSTALL METHOD	Monolithic (Straight)

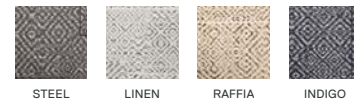


Twist n' Twine

21-1489

SHOWN IN STEEL

BACKING	CQuest™GB Tile
CONSTRUCTION	Loop Pile
PILE THICKNESS	.079 in
RECYCLED CONTENT	84%
INDOOR AIR QUALITY	Green Label Plus Certified
INSTALL METHOD	Non-Directional



Twist n' Twine

MUSC Modern Minds
Designed by LS3P
Photo by Katie Charlotte Photography



Fully Barked

NBC Tower, Chicago, IL
Designed by Eastlake Studio
Photo by Jared Powell Photography

Fully Barked

21-1409

SHOWN IN PIGEON

BACKING	CQuest™GB Tile
CONSTRUCTION	Loop Pile
PILE THICKNESS	.132 in
RECYCLED CONTENT	83%
INDOOR AIR QUALITY	Green Label Plus Certified
INSTALL METHOD	Monolithic (Straight), Parquet (Quarter-Turned)





SMART

FLOR carpet tiles and FLORDots™ (TacTiles®) make our rugs customizable, easy to clean, and a snap to install—and they’re included in every order.

“

FLOR offers the perfect combination of performance and design and offers patterns that are typically not available by any other competitor.

SHEEHAN NAGLE HARTRAY ARCHITECTS

To learn more about this project visit [FLOR.com/commercial](https://www.flor.com/commercial)

Collins Cottage

21-1448

SHOWN IN CHARCOAL

BACKING

CONSTRUCTION

PILE THICKNESS

RECYCLED CONTENT

INDOOR AIR QUALITY

INSTALL METHOD

CQuest™GB Tile

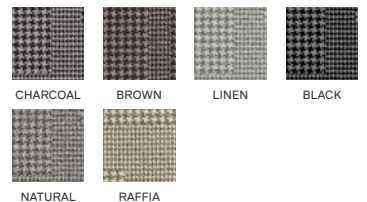
Loop Pile

.145 in

84%

Green Label Plus Certified

Non-Directional



Collins Cottage

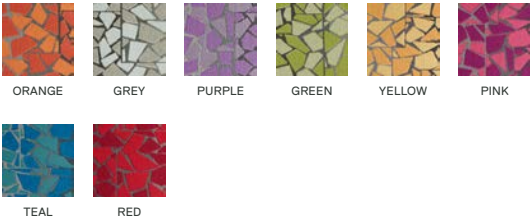
Sheehan Nagle Hartray Architects – Chicago Office
Designed by Sheehan Nagle Hartray Architects
Photo by Mariusz Mizera Photography



Rue

21-1459
SHOWN IN ORANGE, GREY

BACKING	CQuest™GB Tile
CONSTRUCTION	Loop Pile
PILE THICKNESS	.132 in
RECYCLED CONTENT	84%
INDOOR AIR QUALITY	Green Label Plus Certified
INSTALL METHOD	Non-Directional

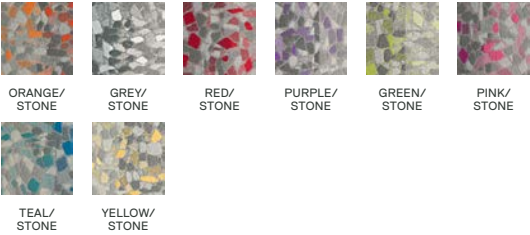


Rue
University of Miami Student Housing Project
Designed by Arquitectonica
Photo by Robin Hill

Stone Course

21-1460
SHOWN IN ORANGE/STONE, GREY/STONE, RED/STONE, PURPLE/STONE

BACKING	CQuest™GB Tile
CONSTRUCTION	Loop Pile
PILE THICKNESS	.094in
RECYCLED CONTENT	84%
INDOOR AIR QUALITY	Green Label Plus Certified
INSTALL METHOD	Non-Directional



Stone Course
University of Miami Student Housing Project
Designed by Arquitectonica
Photo by Robin Hill



Act For The Future.

Since 1995, the Interface family of brands keeps millions of pounds of carpet out of landfills each year. We're constantly innovating new methods for making rugs that are beautiful, smart, and responsible, from the moment they're woven to the time they're recycled into a beautiful new look.



Twweed Indeed

21-1454

SHOWN IN RED

BACKING	CQuest™GB Tile
CONSTRUCTION	Loop Pile
PILE THICKNESS	.086 in
RECYCLED CONTENT	84%
INDOOR AIR QUALITY	Green Label Plus Certified
INSTALL METHOD	Monolithic (Straight) Parquet (Quarter-Turned)



Reoriented

21-1320

SHOWN IN LAVENDER

BACKING	CQuest™GB Tile
CONSTRUCTION	Loop Pile
PILE THICKNESS	.066 in
RECYCLED CONTENT	84%
INDOOR AIR QUALITY	Green Label Plus Certified
INSTALL METHOD	Non-Directional



SHOWN WITH INTERFACE: COMPOSURE COLLECTION | 300307 TRANSCRIBE & 303017 SECLUSION



Reoriented

Wayfair
Designed by Julia Leahy
Photo by Garrett Rowling

Kensington Current

21-1431

SHOWN IN LAVENDER

BACKING	CQuest™GB Tile
CONSTRUCTION	Loop Pile
PILE THICKNESS	.092 in
RECYCLED CONTENT	84%
INDOOR AIR QUALITY	Green Label Plus Certified
INSTALL METHOD	Non-Directional



Kensington Current



Turkish Bloom

Turkish Bloom

21-1416

SHOWN IN PIGEON

BACKING	CQuest™GB Tile
CONSTRUCTION	Loop Pile
PILE THICKNESS	.159 in
RECYCLED CONTENT	85%
INDOOR AIR QUALITY	Green Label Plus Certified
INSTALL METHOD	Non-Directional



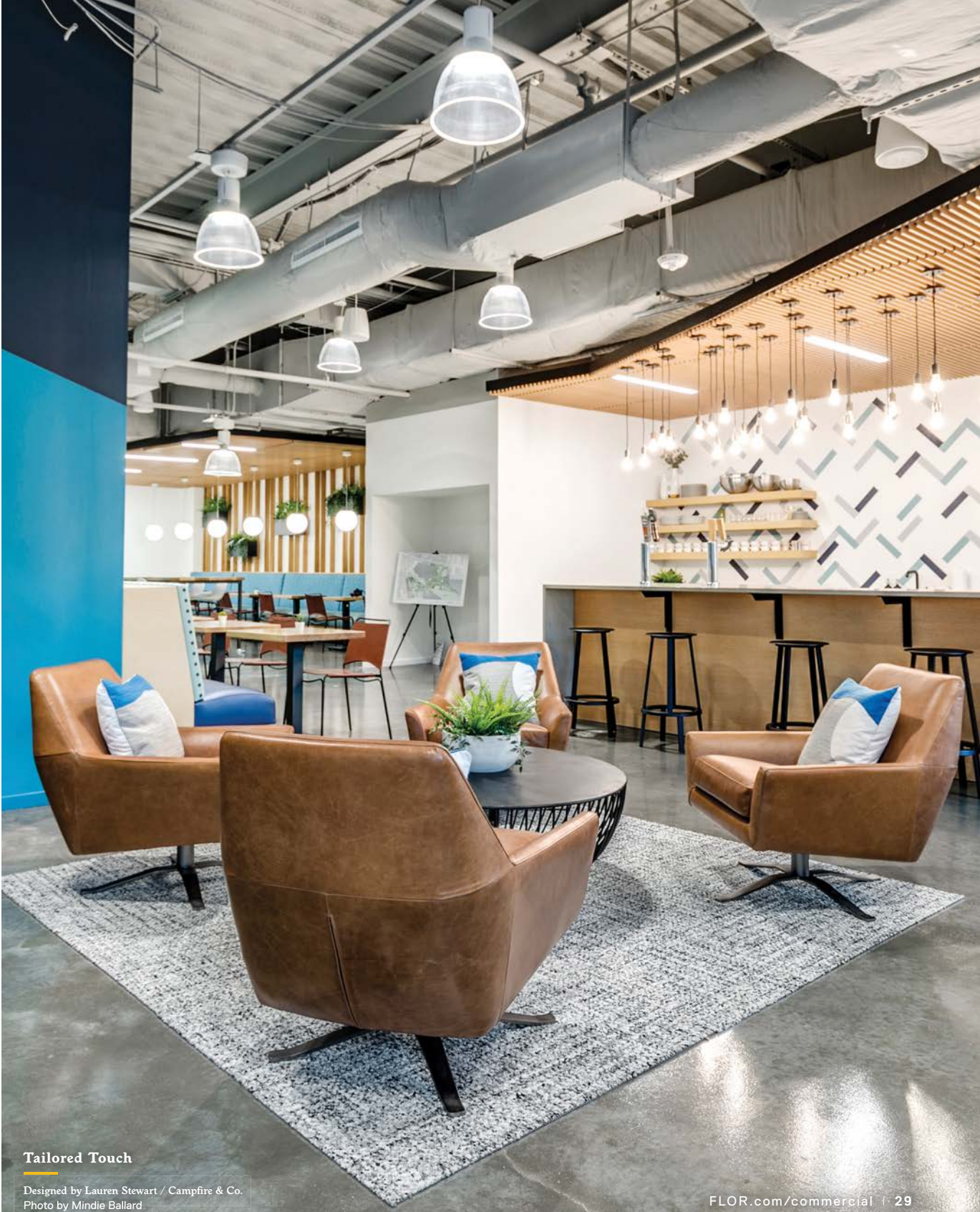
PIGEON

Tailored Touch

21-1450

SHOWN IN LINEN

BACKING	CQuest™GB Tile
CONSTRUCTION	Loop Pile
PILE THICKNESS	.127 in
RECYCLED CONTENT	84%
INDOOR AIR QUALITY	Green Label Plus Certified
INSTALL METHOD	Monolithic (Straight) Parquet (Quarter-Turned)



Tailored Touch

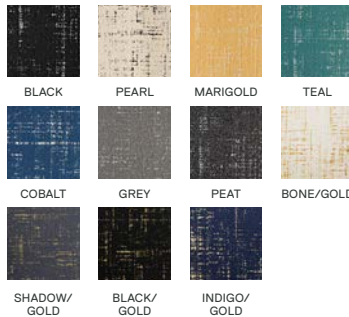
Designed by Lauren Stewart / Campfire & Co.
Photo by Mindie Ballard

Tuxedo Pocket

21-1451

SHOWN IN BLACK

BACKING CQuest™GB Tile
CONSTRUCTION Loop Pile
PILE THICKNESS .124 in
RECYCLED CONTENT 85%
INDOOR AIR QUALITY Green Label Plus Certified
INSTALL METHOD Monolithic (Straight)

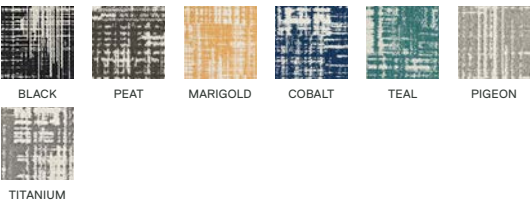


Dappled Daylight

21-1446

SHOWN IN BLACK

BACKING CQuest™GB Tile
CONSTRUCTION Loop Pile
PILE THICKNESS .103 in
RECYCLED CONTENT 84%
INDOOR AIR QUALITY Green Label Plus Certified
INSTALL METHOD Non-Directional



Dappled Daylight

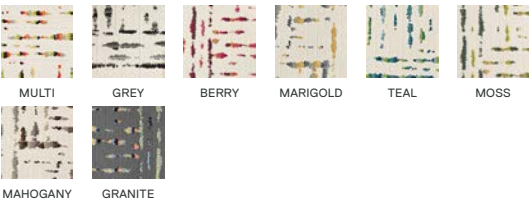
The Deacon
Designed by Kelly Keck / Amy King

Lilting

21-1425

SHOWN IN MULTI

BACKING CQuest™GB Tile
CONSTRUCTION Loop Pile
PILE THICKNESS .125 in
RECYCLED CONTENT 84%
INDOOR AIR QUALITY Green Label Plus Certified
INSTALL METHOD Non-Directional



Lilting

Carr Workplaces, Purdue University
Designed by CSO
Photo by Kris Julius, Frederick | Julius Photography

Tuxedo Pocket

Flight Centre Toronto
Designed by Figure3
Photo by Steve Tsai Photography



Yabara

21-1426
SHOWN IN DUNE

BACKING	CQuest™GB Tile
CONSTRUCTION	Loop Pile
PILE THICKNESS	.176 in
RECYCLED CONTENT	85%
INDOOR AIR QUALITY	Green Label Plus Certified
INSTALL METHOD	Non-Directional



DUNE STONE IRON GRANITE

Yabara

CIVANA Wellness Resort & Spa
Project Lead: Lauren Loefer interiors
Styled by: The Lifestyled Co
Photo by Anna LaBeau

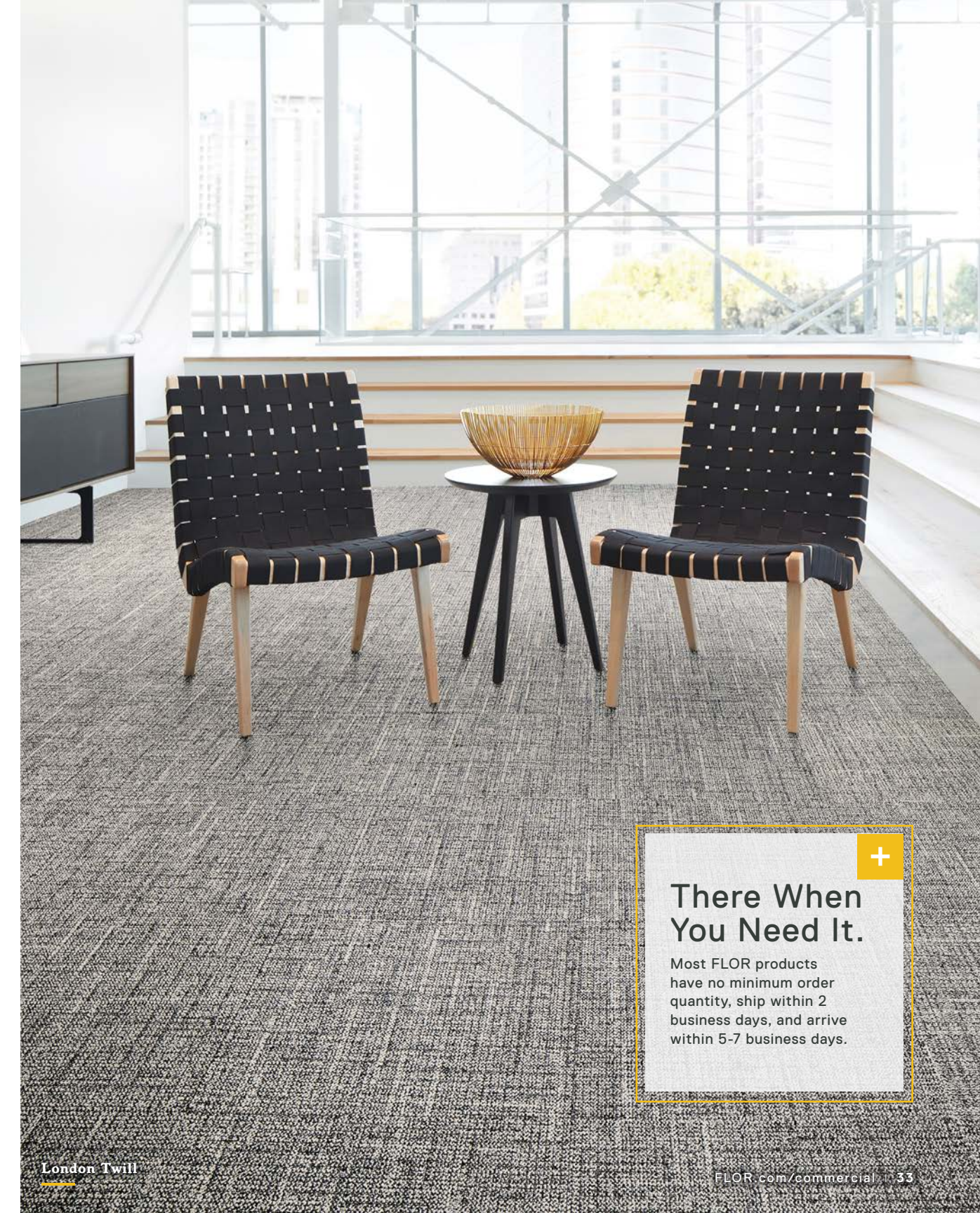
London Twill

21-1504
SHOWN IN MICA

BACKING	CQuest™GB Tile
CONSTRUCTION	Loop Pile
PILE THICKNESS	.078 in
RECYCLED CONTENT	84%
INDOOR AIR QUALITY	Green Label Plus Certified
INSTALL METHOD	Monolithic (Straight)



MICA FLINT



Rising Star

21-1515
SHOWN IN FLINT

BACKING	CQuest™GB Tile
CONSTRUCTION	Loop Pile
PILE THICKNESS	.168 in
RECYCLED CONTENT	86%
INDOOR AIR QUALITY	Green Label Plus Certified
INSTALL METHOD	Monolithic (Straight)



FLINT FIELDSTONE



Rising Star

Salomon & Ludwin
Designed by Nicole Rutledge Design
Photo by Mindie Ballard

+

There When You Need It.

Most FLOR products have no minimum order quantity, ship within 2 business days, and arrive within 5-7 business days.

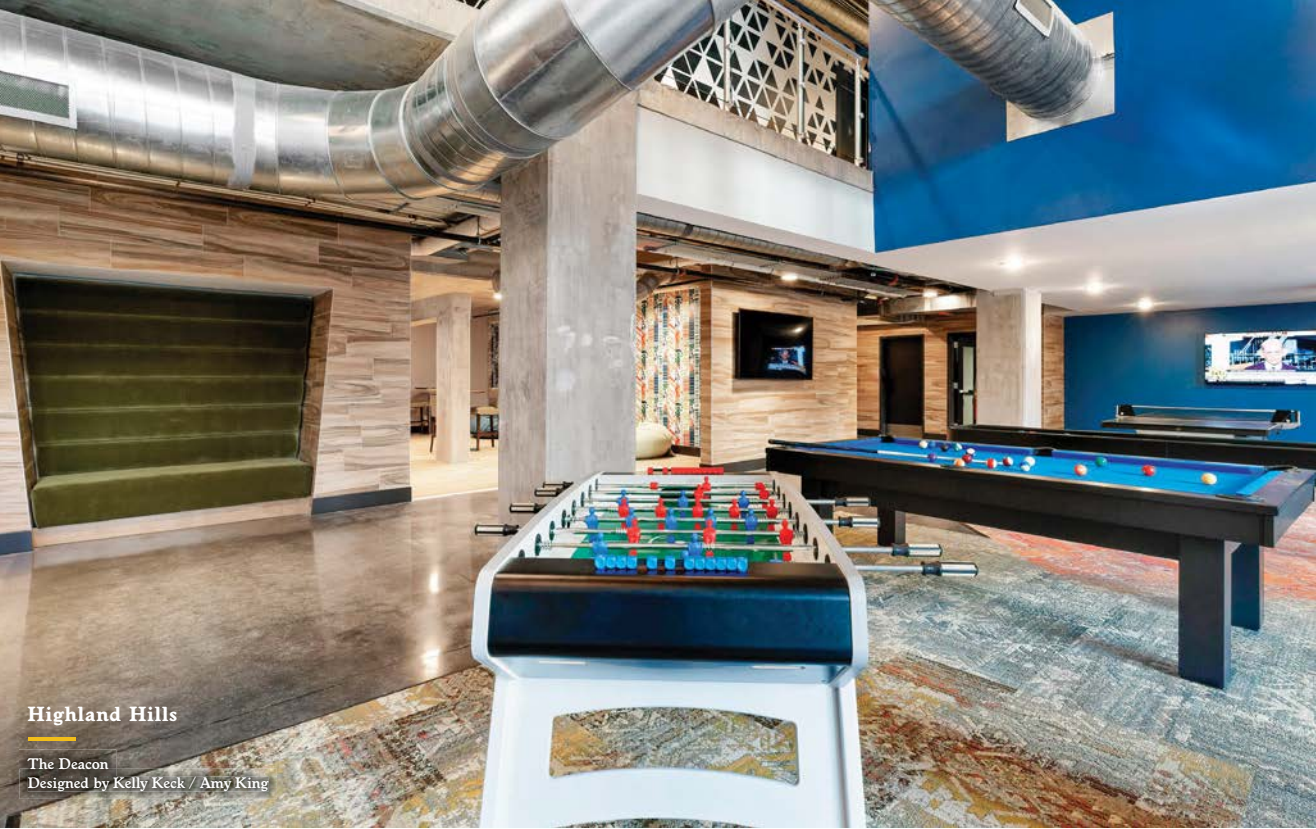
Vintage Vibe

21-1385	
SHOWN IN FLINT/SILVER	
BACKING	CQuest™GB Tile
CONSTRUCTION	Loop Pile
PILE THICKNESS	.159 in
RECYCLED CONTENT	85%
INDOOR AIR QUALITY	Green Label Plus Certified
INSTALL METHOD	Monolithic (Straight), Non-Directional, Parquet (Quarter-Turned)



Highland Hills

21-1462	
SHOWN IN FLANNEL BLUE, WHEAT	
BACKING	CQuest™GB Tile
CONSTRUCTION	Loop Pile
PILE THICKNESS	.171 in
RECYCLED CONTENT	84%
INDOOR AIR QUALITY	Green Label Plus Certified
INSTALL METHOD	Monolithic (Straight)



Roadside Attraction

21-1351	
SHOWN IN FROST	
BACKING	CQuest™GB Tile
CONSTRUCTION	Loop Pile
PILE THICKNESS	.176 in
RECYCLED CONTENT	84%
INDOOR AIR QUALITY	Green Label Plus Certified
INSTALL METHOD	Parquet (Quarter-Turned)



SHOWN WITH INTERFACE: LVT | LEVEL SET COLLECTION | STUDIO SET | PEWTER A00702 & PEPPER A00703



Mod Cow

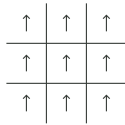
21-1357	
SHOWN IN BLACK	
BACKING	CQuest™GB Tile
CONSTRUCTION	Loop Pile
PILE THICKNESS	.135 in
RECYCLED CONTENT	84%
INDOOR AIR QUALITY	Green Label Plus Certified
INSTALL METHOD	Non-Directional



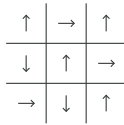
NAME	ITEM NUMBER	PG
Anthracite	21-1494	10
Cambium	21-1330	17
Chasing Pavement	21-1484	16
Collins Cottage	21-1448	23
Crosswise	21-1505	15
Dappled Daylight	21-1446	31
Doe Re Mi	21-1487	12
Down To Earth	21-1402	9
Electric Avenue	21-1478	7
Fully Barked	21-1409	20
Haywood	21-1500	7
Highland Hills	21-1462	35
Hollin Hills	21-1479	11
House Pet	21-1031	11
In The Deep	21-1403	20
Kensington Current	21-1431	28
Lilting	21-1425	31
London Twill	21-1504	33
Made You Look	21-1361	1 (Front Cover), 19
Mod Cafe	21-1447	17
Mod Cow	21-1357	35
Mined And Yours	21-1472	3
Nizhoni Patchwork	21-1424	7
Oasis Retreat	21-1455	14
Palm Reader	21-1467	5
Remembrance	21-1350	6
Reoriented	21-1320	27
Rising Star	21-1515	32
Roadside Attraction	21-1351	34
Rue	21-1459	24
Scottish Sett	21-1449	8

NAME	ITEM NUMBER	PG
Stone Course	21-1460	25
Suit Yourself	21-1318	3
Skyfall	21-1480	15
Tailored Touch	21-1450	29
Tweed Indeed	21-1454	27, 38 (Back Cover)
Twisted Spokes	21-1394	16
Twist n’ Twine	21-1489	21
Turkish Bloom	21-1416	28
Turkish Smoke	21-1420	10
Tuxedo Pocket	21-1451	30
Urban Nature	21-1400	9
Vintage Vibe	21-1385	34
Yabara	21-1426	32

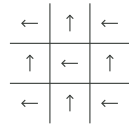
INSTALLATION PATTERNS



Monolithic
(Straight)



Non-Directional



Parquet
(Quarter-Turned)

THE ARRAS COLLECTION



Shop [FLOR.com/arras](https://www.flor.com/arras) whenever you see this icon

FLOR®

Creative
Rug
Design



TWEED INDEED
Shown in Cobalt
Visit FLOR.com

Ready to start your project?

Contact your Account Executive
or our dedicated FLOR
Commercial team today.



866.481.3164



FLORorders@FLOR.com
or email your Interface Account Executive



[FLOR.com/commercial](https://www.flor.com/commercial)
for more information, styles, and colors

2021 Commercial Look Book